



### SCHOOL DETAILS

---

141 EAST ROAD, SEAFORD 3198

**Ph:** 03 9786 5197

**Mobile:** 0409 797 200

**Email:** seaford.park.ps@education.vic.gov.au

**Website:** [www.seafordpark.vic.edu.au](http://www.seafordpark.vic.edu.au)

**Find us on Facebook!**

[www.facebook.com/seafordparkprimaryschool](https://www.facebook.com/seafordparkprimaryschool)



---

**PRINCIPAL'S WELCOME**

---

Dear Parents and Carers,

We are delighted to welcome your child to Seaford Park Primary School and look forward to working with you to ensure your child has the best primary school experience possible. Research shows that when families are actively engaged in their children's education, long term outcomes are greatly improved, so my intention will be to build our partnership over the next seven years.

This booklet is designed to give you all the information you need to start preparing your child for their first year of primary school. It is important to note that the curriculum and program for your child and their classmates will be designed by the teacher based on the strengths and needs of the individual students so, while this is an outline of what we currently do at Seaford Park Primary School, there are likely to be changes made in 2023. We will provide regular updates as we go but please feel free to reach out to anybody at Seaford Park if you have any follow up questions. You can contact the school office by phone or email – details can be found on the cover page.

I look forward to welcoming your child to Seaford Park Primary School at our orientation sessions later this term.

Kind regards



Patrick Halpin



## CONTENTS

<b>SCHOOL DETAILS</b>	<b>1</b>
<b>PRINCIPAL'S WELCOME</b>	<b>2</b>
<b>CONTENTS</b>	<b>3</b>
<b>IMPORTANT DATES</b>	<b>4</b>
<b>SCHOOL VALUES</b>	<b>5</b>
<b>LEARNERS AT THE CENTRE</b>	<b>6</b>
ORIENTATION SESSIONS	7
STARTING IN PREP	7
BOOKS AND SUPPLIES	8
NUTRITION AND DIETS	9
SUNSMART	10
<b>DIVERSITY</b>	<b>11</b>
SCHOOL WIDE POSITIVE BEHAVIOUR SUPPORTS	12
READING	13
<b>SOCIAL NATURE OF LEARNING</b>	<b>15</b>
BUDDIES	16
CLASSROOM HELPERS	17
EXCURSION AND INCURSIONS	17
ASSEMBLY	18
COMMUNICATING WITH YOUR CHILD'S TEACHER	19
COMPASS	19
ACCESSING COMPASS	20
GRADE ROUTINES	20
STUDENT EXPECTATIONS:	20
PARENT EXPECTATIONS:	21
IGNITE THE SPARK	21
NOTICES	22
SESSION TIMES	22
SHOW-AND-TELL	23
SPECIALISTS	23
UNIFORM	23
OUTSIDE SCHOOL HOURS CARE	23



## IMPORTANT DATES

Tuesday, November 8 <sup>th</sup> , 2022	Prep Orientation	2:30 – 3:15pm
	Parent Information Session	2:30 – 3:15pm
Tuesday, November 22 <sup>nd</sup> , 2022	Prep Orientation	2:30 – 3:15pm
	Parent Information Session	2:30 – 3:15pm
Tuesday, November 29 <sup>th</sup> , 2022	Prep Orientation	2:30 – 3:15pm
	Parent Information Session	2:30 – 3:15pm
Tuesday, December 6 <sup>th</sup> , 2022	Prep Orientation	2:30 – 3:15pm
	Parent Information Session	2:30 – 3:15pm
Tuesday, December 13 <sup>th</sup> , 2022	Prep Orientation	10am – 1pm
Friday, January 27 <sup>th</sup> , 2022	Book Pack Collection Day	Times TBC
Monday, January 30 <sup>th</sup> , 2022	Curriculum Day	No school
Tuesday, January 31 <sup>st</sup> , 2023	Meet-Your-Teacher Interview	Times TBC
Wednesday, February 1 <sup>st</sup> , 2022	No school for Preps	
Thursday, February 2 <sup>nd</sup> , 2023	First day of Prep	9:30am – 3:20pm
	Parent Tea and Tissues	9:30am – 10:30am
Wednesday, February 8 <sup>th</sup> , 2023	No school for Preps	
Wednesday, February 15 <sup>th</sup> , 2023	No school for Preps	
Wednesday, February 22 <sup>nd</sup> , 2023	No school for Preps	
Monday, February 27 <sup>th</sup> , 2023	Preps begin attending full time	Including Wednesdays
Monday, March 13 <sup>th</sup> , 2023	Labour Day Public Holiday	No school
Thursday, April 6 <sup>th</sup> , 2023	Last day of Term 1	School finishes at 2:30pm
Monday, April 24 <sup>th</sup> , 2023	First day of Term 2	
Tuesday, April 25 <sup>th</sup> , 2023	ANZAC Day Public Holiday	No school
Friday, June 9 <sup>th</sup> , 2023	Curriculum Day	No school
Monday, June 12 <sup>th</sup> , 2023	King's Birthday Public Holiday	No school
Friday, June 23 <sup>rd</sup> , 2023	Last day of Term 2	School finishes at 2:30pm
Monday, July 10 <sup>th</sup> , 2023	First day of Term 3	
Friday, September 15 <sup>th</sup> , 2023	Last day of Term 3	School finishes at 2:30pm
Monday, October 2 <sup>nd</sup> , 2023	First Day of Term 4	
Monday, November 6 <sup>th</sup> , 2023	Curriculum Day	No school
Tuesday, November 7 <sup>th</sup> , 2023	Melbourne Cup Public Holiday	No school
Wednesday, December 20 <sup>th</sup> , 2023	Last day of Term 4	school finishes at 1:30pm

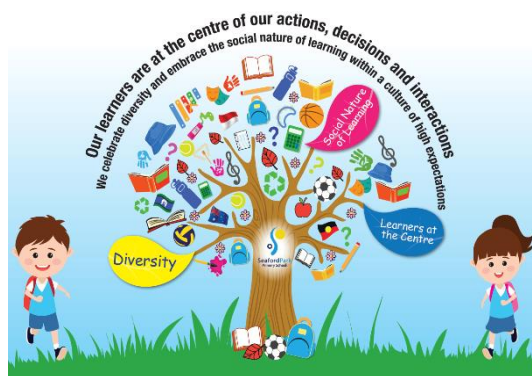


**Please note:**

- *Parent Information Sessions will be held face-to-face while the students are in-class*
- *Preps do not attend school on Wednesdays in February – you will be sent a time for your child to meet with their teacher to complete the English Online Interview (see below for more).*
- *The dates provided here are subject to change*
- *The calendar of upcoming events is included in our monthly newsletter so keep an eye out on Compass and on Facebook.*

## SCHOOL VALUES

Our school values have been carefully and strategically designed to ensure that they are alive and central to everything we do at Seaford Park Primary School. They are more than just words that are displayed in classrooms – they inform our daily practice and form the basis of our expectations in the classrooms, on the yard and when on excursion. We link student successes to our values and celebrate at assembly and in our school newsletter.



This booklet is laid out in sections, as follows



Learners at the centre



Diversity



Social nature of learning

At the beginning of each section, you will read an overview statement on the value, which is then followed by the topics that relate. In many cases, the individual topic could be listed under more than one value so, in those cases, we have selected the most relevant.

We hope this booklet provides you with all of the information you need as your work with your child to prepare them for their 2023 Prep Year.



All decisions we make and all actions we take at Seaford Park Primary School are informed by a collective desire to place our learners at the centre of everything we do. We see all members of our community as learners. The students come to school every day to learn and develop academically, socially and emotionally. The staff work in Professional Learning Communities and focus the teaching on the specific point of need of every child and on Australian and international research into teaching and learning. The parents, carers and wider community come to our school open to learning new things about the development and progress of their children.

**Learner at  
the Centre**

Behaviours you might expect to see around our school that demonstrates how we put the learners at the centre include:

Students	Staff	Parents, Carers and the Wider Community
<ul style="list-style-type: none"> <li>• Take responsibility for your learning</li> <li>• Ask questions</li> <li>• Take risks in a safe environment</li> <li>• Keep an open mind</li> <li>• Provide feedback</li> </ul>	<ul style="list-style-type: none"> <li>• Know your students</li> <li>• Develop a culture of trust</li> <li>• Design challenging tasks related directly to the Victorian Curriculum based on where the students are at from analysis of data and evidence</li> <li>• Seek feedback from the students</li> <li>• Be explicit with expectations (behaviours, learning intentions, success criteria)</li> <li>• Consider the social-emotional aspect of learning</li> <li>• Contribute to the development of research-based practice</li> </ul>	<ul style="list-style-type: none"> <li>• Ensure your children arrive at school ready for their day</li> <li>• Participate in school activities</li> <li>• Demonstrate an interest in what your child is working on</li> <li>• Develop a positive relationship with your child's teacher</li> <li>• Consider the objective view of the teacher</li> </ul>





## ORIENTATION SESSIONS

In order to familiarise your child with their new school environment, we have organised five orientation sessions in Term 4 ([dates listed on page 4](#)); four of the sessions will last approximately 45 minutes (2:30 – 3:15pm) and the fifth will be a half day (10am – 1pm). Your child's teacher will also use the sessions as an opportunity to get to know them, to observe their strengths and to begin planning the curriculum to meet their needs. In addition, your child will be invited to attend a one-off assessment with their teacher, which will provide more information as we prepare for 2023.



Whilst the children are with their teachers for the afternoon sessions,

parents are invited to remain at school for a series of information sessions, as follows:

Tuesday, November 8 <sup>th</sup>	Presentation of the key information contained within this booklet
Tuesday, November 22 <sup>nd</sup>	Introductions to the key staff who will be supporting your child
Tuesday, November 29 <sup>th</sup>	Supporting your child's literacy development
Tuesday, December 6 <sup>th</sup>	Supporting your child's numeracy development

## STARTING IN PREP

Meet-the-Teacher Interviews will be held on Tuesday, January 31st. You will be allocated a 15-minute slot during which, you and the child are invited to come into the classroom to share information with the class teacher. This session will allow you the opportunity to communicate any important information to your child's teacher, as well as further familiarising your child with their learning environment. This should make the first day of school less stressful for them and for you! We ask that you bring your child's school supplies with you (it is important that supplies remain unnamed as we use coloured labels to assist with book identification). You will be notified of your time by email by the end of the current school year.



The first day of school for the Preps will be **Thursday, February 2<sup>nd</sup>**. In order to ensure the students transition into a calm environment, the day will begin at 9:30am.

Please note that parents are not permitted to take any photographs on the school site. We will take photographs of the student and share them with you.



The students will attend school from 9am through 3:20pm four days per week (Monday, Tuesday, Thursday and Friday) for the first four weeks of school. They will also be given a specific time slot on one of the Wednesdays in February, at which time they will come to school for their English Online Interview. Parents/carers are not required to stay for that interview

You will be shown where to drop your child every morning and collect them every afternoon during the information sessions. To ensure that all the children are kept safe, we will not allow the children to leave until we can identify their parent/carer - your cooperation in this regard is appreciated.

### BOOKS AND SUPPLIES

---

Your child's book packs will be available for collection from the school on Friday, 27th January 2023 between 9 and 10:30am. This doubles as an opportunity for you to bring your child for another visit to help familiarise them with their new school environment.

Please bring all books and stationery supplies with you to your Meet-the-Teacher interview on January 31st, which will allow us to start labelling books and organising stationery.

As well as the book list supplies, each child needs to have:

- A Library Bag (you can purchase these from PSW or bring in your own)
- An Art Smock (you can purchase these from PSW or bring in your own)

Please clearly label these, and all items your child brings to school.





**NUTRITION AND DIETS**

Students at Seaford Park Primary School have three opportunities to eat during the school day:

1. Our fruit/vegetable snack is at approximately 10am every morning. We encourage all children to have a piece of fresh fruit or some vegetables to eat, while they listen to a story being read or their classmates presenting their show-and-tell. Children find it more manageable to eat fruit and vegetables that are cut into bitesize pieces – please consider this when packing their lunchbox.
2. Play Snack is eaten at 11am each day. It should be nutritional and appealing enough for them to eat independently and significant enough to get them through until lunchtime. Sometimes, children don't know which items in their lunchbox are for play snack and which are for lunch so practising eating out of a lunchbox over the holidays will help them to prepare for this.
3. Lunchtime at Seaford Park starts at 1:20pm and the students have 10 minutes to eat before bringing any remaining food (without wrappers) to the designated undercover areas to finish. In Prep, however, the children tend to eat a little bit earlier. Sandwiches are always a popular choice but many children also bring in other nutritious lunches such as pasta or rice in a Thermos– a great option for cold winter days! We ask that no nuts are added to lunchboxes as we are a nut-free school. This includes nut spreads such as peanut butter and Nutella.

While some students like to bring juice to school, it is very important that every student has access to water throughout the day. Please ensure your child brings a labelled, refillable water bottle, with an easy-open lid, to school every day. The bubbler taps are available to the students. Soft drinks are not appropriate for school.



Every day is Nude Food Day. Children are asked to bring food to school in containers instead of wrappers. There are fantastic lunchboxes that can be used for this that have separate sections to store different foods. Having Nude Food is a great way to help our environment.

It is not advisable for you to send expensive water bottles, containers, toys, items of clothing, etc. to school as it is highly likely they will be left on the yard or in another classroom at some stage.



The canteen is open on specific days in the summer terms (Term 1 and Term 4), selling treats such as icy poles and zooper doopers. Please keep an eye out on Compass for updates, noting that it is not essential for the children to bring money to school every time.

Special hot lunches are organised once or twice per term. The menu changes each time and notices will be sent home to notify you of these days.

Lunch orders are available from Subway every Friday. All orders are submitted to Subway directly <https://app.canteenhub.com.au/login>

### SUNSMART

---

Children are required to wear a school approved broad brim hat from August through April, as part of the Sunsmart Policy. This may be extended depending on weather patterns. Parents and Carers are also advised to apply long lasting sunscreen before dropping your children to school – we often bring our students outside to engage in activity and exploratory based learning. Please click on the image below to read our SunSmart Policy.



**Slip**



**Slop**



**Slap**



**Seek**



**Slide**



## DIVERSITY

Our school community includes a diverse range of people – we are diverse in the way in which we learn, in how we think, in how we dress and in the languages we speak at home. This diversity helps each one of us to learn from each other, respect difference and celebrate the community in which we live.



The staff also have a diverse range of skills, talents and interest that we share through our Professional Learning Communities. [Click here to learn more about what is involved in working as a member of a Professional Learning Community.](#)

Behaviours you might expect to see around our school that demonstrates how we embrace diversity include:

Students	Staff	Parents, Carers and the Wider Community
<ul style="list-style-type: none"> <li>• Respect the viewpoint of every member of our community</li> <li>• Demonstrate curiosity</li> <li>• Consider all perspectives</li> <li>• Support others</li> <li>• Ensure your comments, ideas and opinions are respectful of others</li> </ul>	<ul style="list-style-type: none"> <li>• Know your students</li> <li>• Know your colleagues</li> <li>• Bring a bit of yourself to school every day</li> <li>• Teach the individual students in your class</li> <li>• Remain open to the ideas and suggestions of others</li> <li>• Consider different ways of communicating and teaching and of the students demonstrating their learning</li> <li>• Encourage positive interactions</li> </ul>	<ul style="list-style-type: none"> <li>• Get to know the other parents in our school community</li> <li>• Support your child to remain open to the viewpoint of every member of our community</li> <li>• Appreciate the wide range of personalities that your child experiences every day</li> </ul>



## SCHOOL WIDE POSITIVE BEHAVIOUR SUPPORTS

Seaford Park Primary School uses an SWPBS approach to support our students to learn and develop appropriate behaviours at school, home and in the wider community. This approach is based on international best practice, which involves educating the students on what they **can** do as opposed to correcting the students when they behave in an inappropriate or unacceptable manner. Each classroom uses our school-wide expectations to develop their own classroom expectations.

Watch out for updates on our work in this area in our monthly newsletters.

### Schoolwide Positive Behaviour Expectations



	<b>Always</b>	<b>Play Areas &amp; Oval</b>	<b>Walkways &amp; Shared Spaces</b>	<b>Toilets</b>
	Walk quietly around school Look after school property Put rubbish in the bin	Finish food in eating area Return sports equipment Play safely	Walk quietly Walk sensibly Clean up any mess Use the correct doors	Use toilets during break times Keep toilets clean and tidy Report problems
	Say kind and positive things Use manners	Look for ways to include others Share equipment Stand up for others	Be patient Make way for others	Respect privacy
	Follow instructions the first time Use whole body listening Wait for your turn to speak	Play fairly Help others understand rules Use appropriate language	Help others make good choices Use an inside voice	Wait patiently Wait quietly Make sure the door is unlocked for the next person





**READING**

Oral language is the basis of literacy development, and your child is now at the stage where they want to ask lots of questions. To support your child in developing their oral language, you could play lots of verbal word games, like I-Spy. You will find lots of ideas on the internet but, to get you started, [you can click here](#).

Curiosity builds a child's interest in learning more about the world around them and is the key to long term success. Our reading program is designed to instil a sense of curiosity in the students about how words work. We use the Multi-Sensory Structured Language (MSL) approach to introduce the world of letters, sounds, words and stories to the children at their individual point of need. At this stage of their learning, reading should be a social activity, so parents are encouraged to read to and with their children every day. This can be a book before bed or exploring rhyming words in our favourite nursery rhymes.

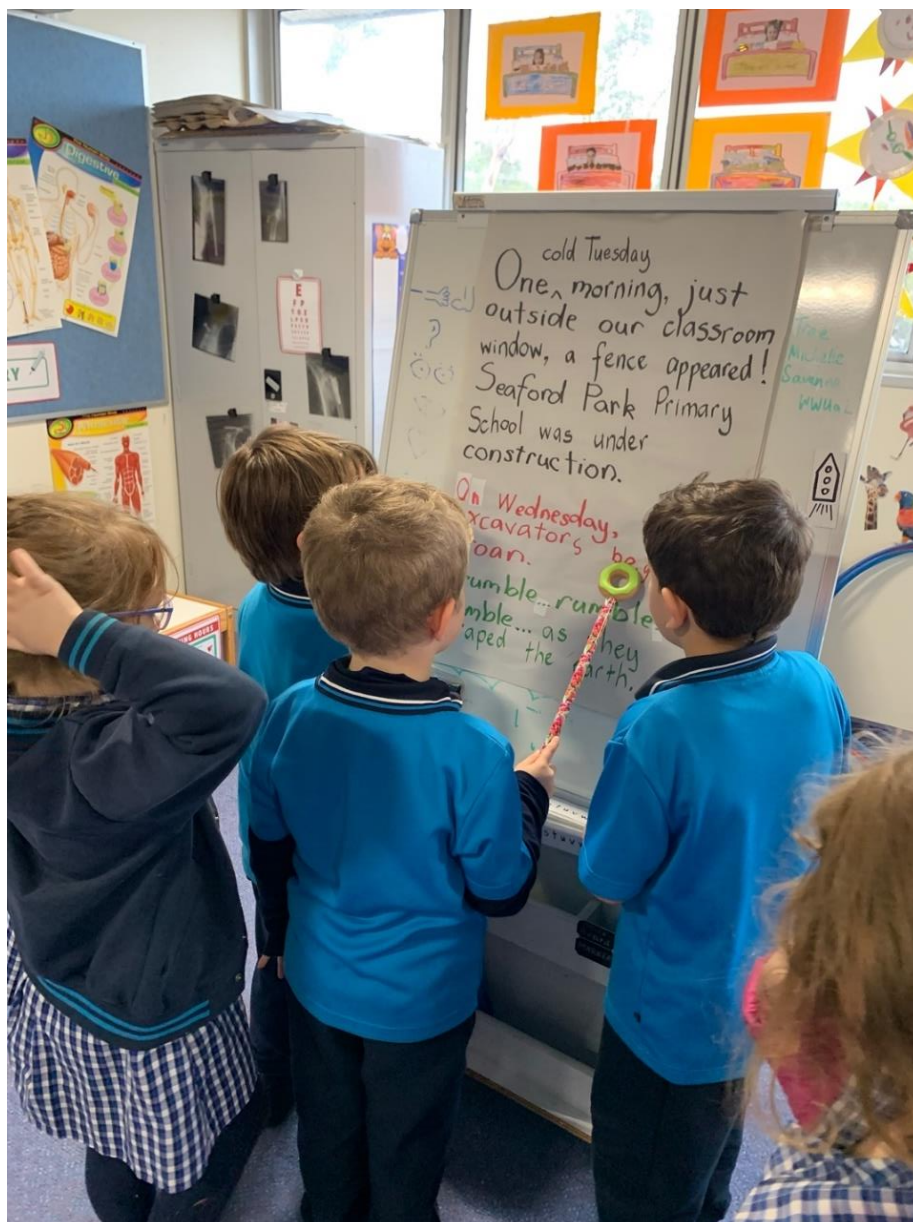
Make it fun and engaging so your child looks forward to this time with you and develops a desire to read themselves, understanding that we read from left to right, top to bottom. Stretch out some of the words as you read as a model for your child and keep playing lots of word games.

You can sit with your child and make up a story or describe the pictures, using sophisticated language. Encourage detailed descriptions– e.g. 'I can see a big blue car with black tyres and 3 passengers.' instead of 'I see a car.' In the classroom we focus on describing objects based on colour, size, shape, texture, quantity, and action.

As your child progresses through their Prep year, they will become familiar with some basic sight words and may recognise some of these when reading. Encourage them to point to each word as they read and look at the pictures to help if they are unsure.



You will see that early books are very repetitive. This builds your child's confidence and prepares them for more challenging books once they have built up their bank of sight words. Take Home Books are designed to be easy, to build confidence and provide an opportunity to increase their fluency with words they know. We work on more challenging books in the classroom. Throughout the year, you will see reading goals in your child's reading logbook. This goal has been selected specifically for your child, based on an area in which they can improve. Remind your child about their goal before you begin reading to help them progress. The teachers will regularly assess your child's progress, focusing on their fluency, expression and comprehension. Creating a positive routine with your child and reading each night is a wonderful way to support your child's learning.





## SOCIAL NATURE OF LEARNING

Learning is a social activity. At Seaford Park Primary School, we provide opportunities for the students to share their ideas and thinking about their learning to maximise the outcomes for all our students. We create environments in which collaboration is made possible through the layout of our classrooms and our central Atrium space ensures that our whole school community can come together. This same philosophy forms the basis of all staff professional development and conversations. Our Professional Learning Communities involve the teachers and education support officers working together and sharing best practice.



**Social Nature  
of Learning**

The involvement of parents, carers and the wider community have been proven to have a significant impact on student learning. At Seaford Park Primary School, we create opportunities for the important adults in our students' lives to actively participate in the school. For more information on how you can get involved, [please click here](#).

Behaviours you might expect to see around our school that demonstrates how we integrate the social nature of learning include:

Students	Staff	Parents, Carers and the Wider Community
<ul style="list-style-type: none"> <li>• Get involved in all aspects of school life</li> <li>• Share your ideas and listen to the ideas of your classmates</li> <li>• Communicate respectfully</li> <li>• Come to school ready to collaborate</li> </ul>	<ul style="list-style-type: none"> <li>• Know the parents and families of the students in your class</li> <li>• Know your colleagues</li> <li>• Provide opportunities for collaboration</li> <li>• Be prepared for meetings</li> <li>• Get involved in school events</li> <li>• Develop partnerships with parents, families and community members</li> </ul>	<ul style="list-style-type: none"> <li>• Actively participate in the school</li> <li>• Consider how you can contribute to the education experience of the students</li> </ul>



**BUDDIES**

Seaford Park Primary School runs a Prep/Year 6 buddy program. All students will be introduced to their buddy during their orientation sessions and will get lots of time to get to know them and build a relationship with them throughout their Prep year.

The buddies come into the classroom for activities during the first weeks of Term 1 and are also present when the Preps join the whole school in the yard for the first time. Having a Year 6 buddy helps to create a smooth transition into primary school and supports social interactions for the Preps and Year 6 children alike!



---

**CLASSROOM HELPERS**

---

We invite all parents, grandparents and friends to assist in the classroom throughout the year. Specific programs and activities that classroom helpers are invited to support will be published by your child's teacher.

We also appreciate your support in keeping our buildings and grounds clean, tidy and organised. The students participate in this work every second Friday from 2:30 until 3:20pm. Watch out for the updates in the school newsletter, on Compass and on Facebook and join us in our work as Friends of our Gardens.

---

**EXCURSION AND INCURSIONS**

---

During the year there will be special events for the children to attend. These are generally related to the integrated topics we are learning about in the classroom. Please ensure you have your push notifications turned on for Compass to ensure you receive the latest information on incursions and excursions.





**ASSEMBLY**

Our assemblies are held in the atrium every second Friday and are an opportunity to celebrate the students' learning and achievements.

Weekly awards are presented based on the behaviours that align with our school values and our School Wide Positive Behaviour Supports. Parents, carers and other people who are important in the lives of our students are invited to attend.

Each grade is given an opportunity to present their learning at assembly at least once throughout the year. This presentation can take many forms - student presentation, performance, pre-recorded video, song, etc.

Specific dates will be communicated at the beginning of the school year.



---

**COMMUNICATING WITH YOUR CHILD'S TEACHER**

---

Parents and carers are central partners in the education of all children. To create and maintain strong relationships between home and school, your child's teacher will communicate the focus of the curriculum through 3 termly updates, designed to provide you with an outline of what your child is learning and how you can support them at home. These updates may take the form of newsletters, samples of your child's work with feedback from the teacher and, in Terms 2 and 4, your child's Semester Report. Semester reports show you how your child is doing against the Victorian Curriculum and all families are encouraged to read the report to ensure you are fully informed of how your child is progressing. You can discuss the content of your child's Term 2 report at the Parent-Teacher Interview, which will be held early in Term 3.

If there is something specific you would like to discuss with your child's teacher, you can contact them at any stage through Compass.

---

**COMPASS**

---



The Compass Parent Portal is an integrated, online portal that allows you to access up-to-date and meaningful information about our school and your child's progress.

As well as having an inbuilt email system, through which you can contact your child's teacher, Compass includes many different features, including the ability to:

- Monitor your child's attendance and enter an explanation for absence or lateness
- Update your family contact information
- Download and view your child's Semester Reports
- Complete permissions at the beginning of each year
- Provide consent and payment for your child to attend excursions and activities
- Book your parent teacher interview

Every family will be provided with login details from the school office.










## ACCESSING COMPASS

Compass is a web-based system that is accessible on any modern web browser (Internet Explorer, Firefox, Chrome, Safari) or by using the Compass iOS or Android apps. To download the app to your device, search 'Compass School Manager' in the applicable app store. Search for Seaford Park Primary School and log in.

For full access to all of the Compass features, it is best to use a computer. All of the most commonly used Compass features can also be found on the mobile app.

If you have any trouble finding the Compass link for our school, go to

**<http://Schools.compass.edu.au>** where you can search for our school to access our link or contact the school office.

-  [Profile](#) (Attendance, Schedule, Reports)
-  [Send email to](#)  [s teachers](#)
-  [Add Attendance Note](#) (Approved Absence/Late)
-  [View Academic Reports](#)
-  [Order Photos](#)
-  [Book Parent Student Teacher Conference](#)

## GRADE ROUTINES

### STUDENT EXPECTATIONS:

#### Prep, 2022



##### Line up at your assigned space by 9am

*Music will begin playing at 8:58am, providing a cue for the students to stop playing, collect their belongings and head to their classroom door to meet their teacher. If a child arrives at school after the bell, they will be required to go to the office to be signed-in and collect a late pass.*



##### Enter the classroom independently

*Students will say goodbye to their parents at the door and enter the classroom with their teacher and classmates.*

##### Unpack your schoolbag

*Students will unpack their schoolbags as directed by their classroom teacher and prepare for the day's learning by following the agreed routines and structures in place. This will maximise the time available for learning.*



##### Leave the classroom independently

*At the end of the school day, students will gather their belongings and leave the classroom with their teacher and classmates to meet their parent/carer at the allocated door. All students are encouraged to carry their own schoolbags home.*





## PARENT EXPECTATIONS:



**Send a note to the teacher if your child will leave school early, is not wearing their school uniform or if there is any other important information the teacher should be aware of**

*Teachers have more than 20 students to consider so verbal messages are often forgotten throughout the busy day. By providing information in writing (in a note or via Compass), you will support the teacher to ensure they can be kept fully informed.*



**Enter a note on Compass if your child is absent**

*You will receive an SMS message after 9:30am if your child is not at school and we have not received a note explaining their absence. Please help us by ensuring you let us know if your child is going to be absent as soon as you can.*



**Sign in at the office if you are visiting the school through the day**

*In line with our Child Safety Policy, all visitors to the school must sign in at the office and collect a visitor's badge.*

**Drop your child at a safe place**

*There is ample parking on the streets around the school. Please follow the guidelines for safely dropping your child to school, ensuring we do not cause a hazard to any of our fellow community members (students, staff, parents and neighbours.)*

## IGNITE THE SPARK

Our fundraising efforts at Seaford Park Primary School have resulted in the development of many areas and programs within our school. You will read information in our monthly newsletters about how you can 'Ignite the SPark'. Through 2022, our fundraising efforts have enabled us to install a shade sail over our Indigenous Garden to create an outdoor learning space, install heating and cooling in our specialist building, complete the ground marking around the school and replace the furniture in two more classrooms. Our current focus is on replacing the goal posts on the oval, creating a more inviting environment for our students during playtime. Your voluntary contributions will help us to ignite the SPark.



If your child is bringing money to school to spend at the canteen or for another fundraising event (Mother's/Father's Day stalls, for example), please ensure it is in a sealed envelope or zip lock bag with your child's name clearly marked on the front. Children like to keep money in their pockets but it often falls out and gets lost, resulting in upset.



---

**NOTICES**

---

Please read through the school newsletter with your child for important updates and news. You will also find useful information (including a link to our newsletter) on Compass and on our Facebook page —we suggest you like and follow us to keep up to date.



## **Seaford Park Primary School**

---

**SESSION TIMES**

---

This year the school day is divided up as follows:

8:45 – 9am:	Supervised playtime – <i>no student should arrive prior to 8:45am</i>
9 – 9:20am:	English Enhancement*
9:20 – 11am:	Class time (fruit break will be at 10am)
11.00 – 11.20am:	Recess
11:20 – 11:40am:	Maths Enhancement*
11.40am – 1.20pm:	Class time
1.20 – 1.30pm:	Eating time
1.30 – 2.20pm:	Lunch play
2.20 – 3.20pm:	Class time
3.20pm:	Dismissal

*\*The first 20 minutes in the morning and after recess are dedicated to whole-school English and Maths Enhancement. It is important that your child arrives at school on time every morning to ensure that they don't miss out on the important learning.*



---

### SHOW-AND-TELL

---

We will commence Show and Tell once the children are at school full-time. A timetable displaying the day on which your child will have Show-and-Tell will be sent home in the first few weeks of Term 1. Please encourage your child to choose an item that they are familiar with and can easily talk about. Practising at home in front of the family is good preparation for talking in front of their peers.

---

### SPECIALISTS

---

A timetable will be sent home at the beginning of the year so you know which days your child will have Auslan (our LOTE language), Visual Arts, Physical Education, Performing Arts and STEM. Please ensure your child has an art smock for Art, a library bag, and appropriate shoes for PE.

---

### UNIFORM

---

Our school has a compulsory uniform that all students are required to wear to school every day.

[Please click here to find out more about our uniform and to order through PSW.](#)

We also have some second-hand uniform items for sale through the school office. Please speak to Nadine or Chris to see what's available.

---

### OUTSIDE SCHOOL HOURS CARE

---



TeamKids provide before school, after school and vacation care for the students at Seaford Park Primary School. The program runs from the BER building. All families are required to register their child for TeamKids on enrolment to ensure we can organise care for your child in emergency situations.

Before School Care runs from 7 until 8:45am; After School Care runs from 3:20 until 6pm and Vacation Care runs during the school holidays and on Curriculum Days from 7am until 6pm. As we are working on building community partnerships, the vacation care will run from Belvedere Park Primary School – please let us know if you have any feedback on the service.

You can also click on the TeamKids logo for more information.

